

## Annexin V- PE Apoptosis Analysis Kit



天津三箭生物技术股份有限公司  
Tianjin Sungene Biotech Co., Ltd.  
精准 高效 稳定 Precision Efficient Stable

Catalog Number	Vial Size
AO2001-09A-G	25 tests
AO2001-09A-H	100 tests

**Market** | 400-621-0003  
marketing@sungenebiotech.com

**Support** | 022-66211636-8024  
techsupport@sungenebiotech.com

**Web** | www.sungenebiotech.com

**Important Note:** Each Buffer should be diluted by using the same pH PBS as mentioned below.  
This product is guaranteed up to one year from purchase.

### Description

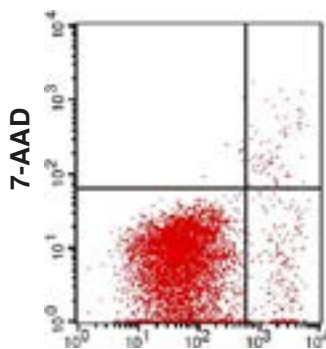
Annexin V (or Annexin A5) is a member of the annexin family of intracellular proteins that binds to phosphatidylserine (PS) in a calcium-dependent manner. PS is normally only found on the intracellular leaflet of the plasma membrane in healthy cells, but during early apoptosis, membrane asymmetry is lost and PS translocates to the external leaflet. Fluorochrome-labeled Annexin V can then be used to specifically target and identify apoptotic cells.

Annexin V Binding Buffer is recommended for use with Annexin V staining.

### Products List

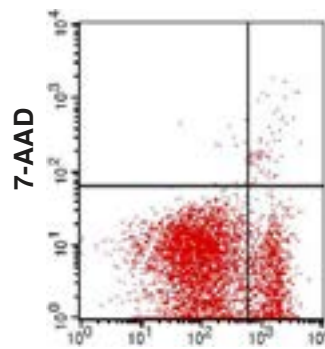
AO2001-09	Annexin V-PE	Keep as concentrated solution. Store at 4°C and protected from prolonged exposure to light. Do not freeze.
AO2003	7-AAD Viability Staining solution	Keep as concentrated solution. Store at 4°C and protected from prolonged exposure to light. Do not freeze.
AB2000	Annexin V Binding Buffer	Keep as concentrated solution. Store at 4°C as an undiluted liquid. For extended storage aliquot contents and freeze at -20°C.

### Illustration of Immunofluorescent Staining



**Annexin V-PE**

Jurkat Cell stained with Annexin V-PE and 7-AAD



**Annexin V-PE**

Camptothecin treated Jurkat Cell stained with Annexin V-PE and 7-AAD

### Suggested Staining Protocol

- Dilute 3 mL 10× binding buffer with 27 mL distilled water for 10 tests.
- Harvest cell (about  $1 \times 10^6$  cells per test) then wash with cold PBS.
- Suspend cells in 1 mL 1× Binding Buffer, 300×g centrifugation for 10 minutes, then remove the Binding Buffer from the cell pellet.
- Resuspend cells in 1 mL 1× Binding Buffer, adjust cell concentration to  $1 \times 10^6$  cells/mL.
- Add 100  $\mu$ L of cells ( $1 \times 10^5$  cells) to each labeled tube.
- Add 5  $\mu$ L of Annexin V-PE to appropriate tubes.
- Gently vortex each tube and incubate for 10 minutes in room temperature, protected from light.
- Add 5  $\mu$ L 7-AAD solution incubation for 5min in room temperature, protected from light.
- Add PBS to 500 $\mu$ L and vortex gently.
- Analyze by flow cytometry in 1 hour.

### References

- [1] Fadok, V.A. et al. 1992. J. Immunol. 148:2207.
- [2] Tait, J.F., et al. 1989. J. Biol. Chem. 264:7944.
- [3] Andree, H.A., et al. 1990. J. Biol. Chem. 265:4923.
- [4] Tiagarajan, P., et al. 1990. J. Biol. Chem. 265:17420.
- [5] Dachary, P.J., et al. 1993. Blood 81:2554.
- [6] Koopman, G., et al. 1994. Blood 84:1415.
- [7] Martin, S.J., et al. 1995. J. Exp. Med. 182:1545.
- [8] Wood, B.L., et al. 1996. Blood 88:1873.

**For Research Use Only.**